



Morlock

MTE

SERIES

The Variable

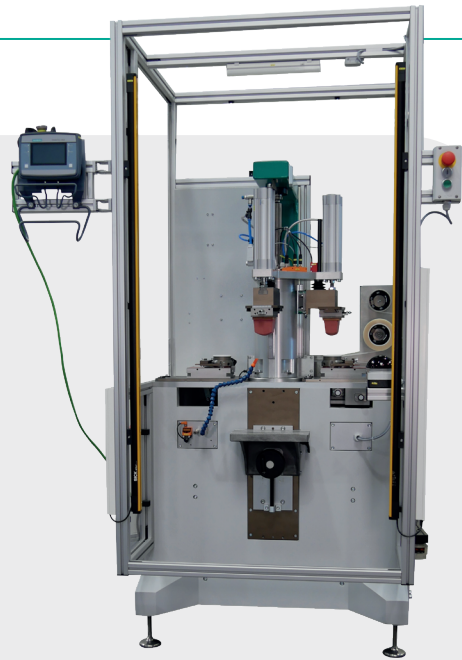
MTE Quick 3.0
MTE 125
MTE 125 LS

MTE – The variable

In addition to a time-optimized production process (through partially parallel movements), the MTE series offers many setting options:

- Print headscan be controlled individually
- Setting the print order
- Print option

Your MORLOCK team will be happy to advise you on two different levels!



The MTE in action:

www.morlock.de/videos/MTE

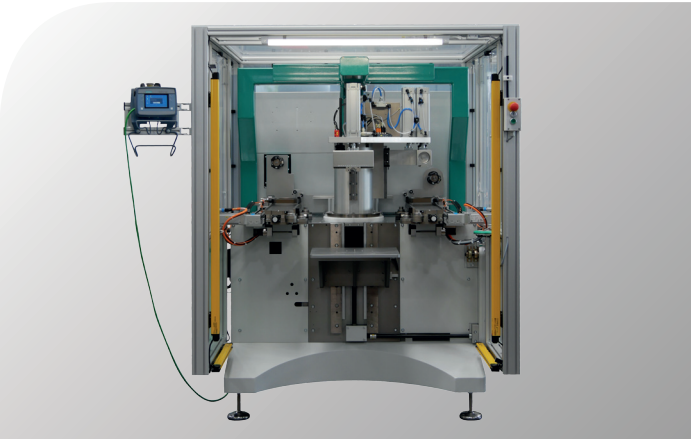


At a glance!

- ✓ **two- or single color printing machine** (with a correspondingly higher number of cycles)
- ✓ **separate tampon stroke adjustable** through direct Input via the display interface
- ✓ for **connection** to external **PLC**
- ✓ closed inking system available as standard **MORLOCK MCI** (patented)
- ✓ as a manual workstation or **integration in existing automations**

	MTE Quick	MTE 125	MTE 125 LS
Cliché size, max.	125 x 250 mm	150 x 280 mm 250 x 280 mm (oval pot)	140 x 650 mm
Print image size	Ø 105 mm / 70 x 70 mm	Ø 105 mm / 70 x 70 mm 160 x 80 mm (oval pot)	max. 300 x 90 mm
Tampon stroke	160 mm vertically	160 mm vertically	max. 160 mm
Pressure force, max.	1.000 N (100 kp) per tampon unit	1.600 N (600 kp), pressure cylinder	1.600 N (160 kgf) and 3.200 N (special version)
Printing capacity, max.	1.400 parts / hour two-tone	1.000 parts / hour two-tone	700 parts / hour two-tone
Drive	Tampon stroke and pneumatic paint dispenser, Pendulum movement MEGATORQUE	Tampon stroke and pneumatic paint dispenser, Pendulum movement MEGATORQUE	Tampon stroke and doctor blade modules pneumatic, electromechanical
Control	SPS SIEMENS S 7	SPS SIEMENS S 7	SPS SIEMENS S 7
Mains connection	230 V ~ 50/60 Hz	400 V ~ 50/60 Hz	400 V ~ 50/60 Hz
Control voltage	24 V	24 V	24 V
Lerecording	ca. 1200 W	approx. 1.500 W	approx. 1.500 W
Distance measurement	magn. position measuring	magn. position measuring	magn. position measuring
Wight	approx. 510 kg	approx. 1.800 kg	approx. 2.000 kg
Dimensions*	approx. 940 x 900 x 1.700 mm	approx. 1.800 x 1.300 x 1.950 mm	

*Width x depth x height with full protective cladding and side-mounted, swiveling control panel.



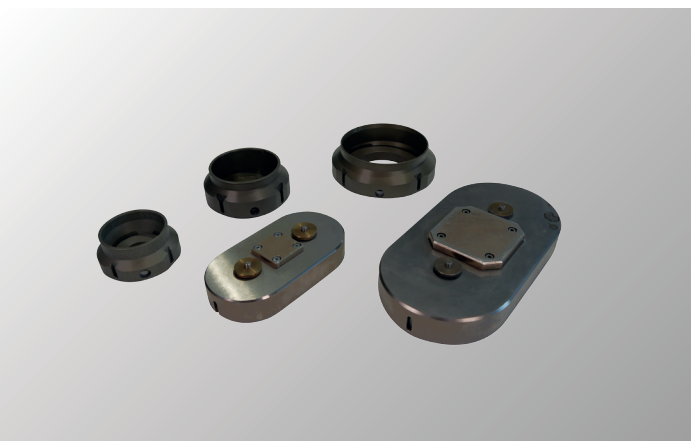
MTE 125

The proven principle of the MORLOCK Twister Ergonomic of the MTE Quick is also used here. The MTE 125 has a central pressure module with a 90° pendulum movement. Two printheads are swiveled alternately to the ink dispensers, to the workpiece and to the pad cleaning. Compared to its smaller brother, the MTE 125 offers larger print images and a higher printing force.



MTE 125 „Long-Slide“

The MTE 125 LS combines the proven advantages of the MTE series with the qualities of MORLOCK „Long-Slide“ (MLS series). Especially with long print images (up to 300x 90 mm), this pad printing machine offers a wide range of uses. Like all machines from the MTE series, the MTE 125 LS has a height-adjustable angle table, cliché adjustment (X-Y angle position) and a coordinated pressure force adjustment.

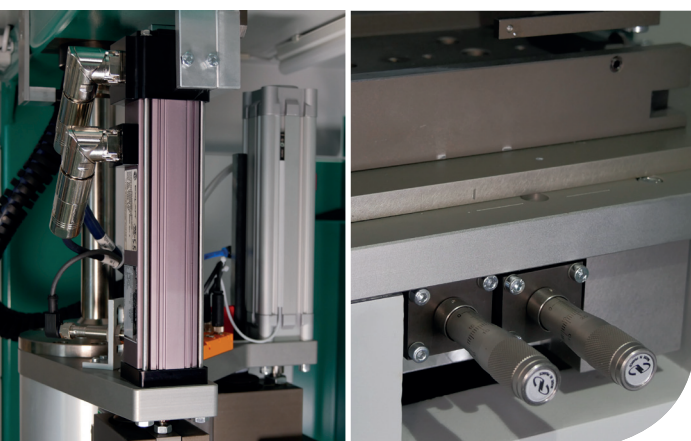


variable Cliché sizes

Due to their variability, different ink cup and cliché sizes can be used optionally. The following squeegee modules can be used: 80x 160 mm, 150 x 160 mm, 100x 210 mm, 150 x 210 mm and 125 x 250 mm.

Use Morlock MCI ink cups (round) as well as oval cups.

Print images up to max.d = 105 mm, or 70 x 70 mm, or 160 x 80 mm (oval cups) can be realized.



variable Equipment

For the highest quality demands in the positioning of the print image, this machine can be optionally equipped with the precision cliché adjustment. This facilitates the quick and precise adjustment of the individual cliché positions by means of a micrometer fine adjustment. The pressure cylinders can also be selected as electrical drive units. These are optionally used when particularly precise tampon strokes are required. They also allow the definite lingering of the tampon on the cliché and the product.

THINK COLORFUL

IN PAD PRINTING OR
DIGITAL PRINTING

More information at:
morlock.de



ITW MORLOCK GmbH • Lise-Meitner-Straße 9 • D-72280 Dornstetten



MORLOCK

A Member of the Industrial Decorating Solutions (IDS) Group

CONTACT

Phone: +49 (7443) 285-0

E-Mail: info-morlock@itwids.com

www.morlock.de