



Morlock

MPE

SERIES

The Multifunctional

MPE 100.1
MPE 125.1

MPE – The Multifunctional

Performance, reliability and flexible application characterize the new MPE series. All MPE machines offer the highest safety standard in accordance with the current CE standard with optimum user-friendliness and high safety comfort equipped with the new Siemens 87 control system, the MPE offers optimum integration options in automations and linking with peripheral devices.

Your MORLOCK team will be happy to advise you!



Die MPE in Aktion:
www.morlock.de/videos/MPE



At a glance!

- ✓ **Adjustable residence time** of the pad on cliché and product for improved results on textured surfaces
- ✓ **Adjustable throttles** for speed adjustment of the movements
- ✓ Intuitive, colorful, multilingual **user interface with 4" touch screen**
- ✓ **Autonomous operation** or simple integration into automation systems
- ✓ **Information interface** for industry 4.0
- ✓ **CE compliant design** Morlock manual workstation with machine stand MS 230.1
- ✓ **Low blade wear** through radial pot fixation
- ✓ Option of electrical **Pad cleaning**
- ✓ 20 memorizable **programs**

	MPE 100.1	MPE 125.1
Cliche size	100 x 210 mm optional 100 x 215 mm	250 x 280 mm
Print image size, max.	80 mm	max. 70 x 180 mm
Pad stroke	160 mm vertical, of which 29 mm below machine level	200 mm vertical, of which max. 110 mm below cliché level
Compressive force, max.	1080 N	1500 N
Pressure capacity, max.	1200 clocks / h	1200 clocks / h
Drive	pneumatical	pneumatical
Control Panel	SPS Siemens S7	SPS Siemens S7
Power supply	230 V ~ 50/60Hz	230 V ~ 50/60Hz
Control voltage	24 V	24 V
Power input	approx. 100 W	approx. 100 W
Weight	approx. 65 kg	approx. 120 kg *
Dimensions*	385 x 880 x 665 *	545 x 710 x 1180 mm *

* with pad cleaning



MPE 125

The larger MPE 125.1 version of the Industry 4.0-capable machine is also characterized by its high performance and flexible application options.

Versatile **Printing angle**

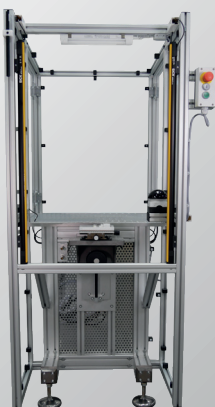
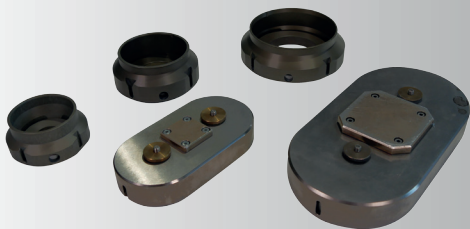
The machines of the MPE series can also be built as „S“ swivel head pad printing machines. These machines can take the print vertically from the cliché and deliver the print image horizontally onto the product. A swivel angle of 45° - 90° is continuously adjustable. Special swivel angle positions are to be clarified on request.

Versatile **Padprinting image**

A transverse doctor blade system is installed in the „LS“ longslide press. Here, an ink cup is guided over a transversely installed cliché plate. This concept allows print sizes of approx. 105 * 320 mm are possible. Positive MCI ink cutting geometries are used here.

Morlock **Manual workplace**

As a CE-compliant machine, the Morlock machines are installed in the MS 230.1 machine stand. The dangerous movements of the machine are protected by a protective housing. Access doors are equipped with safety switches, the insertion area is protected by a light barrier. This combination allows safe working on the machine. Without the machine stand, the single-color machines are declared as components with a declaration of incorporation according to EC Machinery Directive 2006/42/EC Annex II 1.B.



THINK COLORFUL

IN PAD PRINTING OR
DIGITAL PRINTING

More information:
morlock.de



ITW MORLOCK GmbH • Lise-Meitner-Straße 9 • D-72280 Dornstetten



MORLOCK

A Member of the Industrial Decorating Solutions (IDS) Group

CONTACT

Phone: +49 (7443) 285-0

E-Mail: info-morlock@itwids.com

www.morlock.de